

## Troubleshooting

### What happens if my heated belt is torn?

**DO NOT** attempt to replace or interfere with the electrical components in the heated belt. Return the garment to EXO<sup>2</sup> for repair.

### What happens if my heated belt doesn't get warm?

Firstly, check that you have the HeatWave belt connected to a power source, either via the motorcycle power cord or via the optional battery pack.

If you have your HeatWave connected via the motorcycle power cable, check that the cable is correctly fitted to your bike battery. In addition, check that the motorcycle power cable is correctly fitted to the cable that connects to the FABROC<sup>®</sup> heat panels. The heat panel cable can be found inside the right hand pocket of your HeatWave.

When using the motorcycle power cable to connect to your HeatWave, the small battery cable that connect to the optional portable battery pack, should be plugged into its associated socket that is also found inside the right hand pocket of your HeatWave.

If you are using the portable battery pack, ensure that your battery is charged. This can be done by firstly plugging the battery pack into the associated charger. If the red light on the charger comes on **and stays on**, the battery pack needs to be charged. If the battery pack is charged, check that they are properly fitted to the plug the battery to the FABROC<sup>®</sup> panels.

## Warranty

Every heated belt is supplied with a one-year warranty covering all electronic and mechanical failures. In the unlikely event that any part should fail as a result of a defect within the first year, return it to us and we will repair or replace it free of charge. Note: the warranty does not cover accidental damage or improper cleaning.

Should you have any questions about your heated products, please contact:



**The Heat Inside**

Customer Services  
EXO<sup>2</sup>  
Caledonian House, Phoenix Crescent  
Strathclyde Business Park, Bellshill  
Lanarkshire ML4 3NJ

Tel: +44 (0)1698 746347

WEB: [www.exo2.co.uk](http://www.exo2.co.uk)  
E-mail: [sales@exo2.co.uk](mailto:sales@exo2.co.uk)



**The Heat Inside**

## HEATWAVE HEATED BELT USER INSTRUCTIONS

### Welcome

Your high performance HeatWave heated belt has been designed to provide you with warmth where and when you need it, whatever the weather.

The novel heating system is based on FABROC<sup>®</sup>, a revolutionary material invented for use in the aerospace industry that is extremely efficient in generating heat from a low voltage source. FABROC<sup>®</sup> panels are sewn into your HeatWave to provide direct heat to your body at the kidney level, ideal to transfer warmth through your body via the bloodstream.

FABROC<sup>®</sup> panels are pre-set to a surface temperature of 46°C. It is not possible to 'overheat' FABROC<sup>®</sup> as it automatically uses less power as it reaches its operating temperature, a unique property that ensures the material is intrinsically safe.



### Product Contents

- HeatWave heated belt.
- HeatWave motorcycle power cord .....(Fused).
- C-703 Portable battery pack. ....(Optional).
- SW168-17 Battery charger. ....(Optional).

## Getting the Best Results

The portable battery pack will be supplied with a maintenance charge, and we recommend that you connect it to the charger until fully charged prior to first use. This battery pack does not require pre conditioning and will deliver 100% of power from the first cycle.

The closer the FABROC® panels are to your skin, the more heat you will feel, so you should normally wear only a fine pullover, shirt or blouse underneath your HeatWave.

The portable battery pack will provide heat on the lower back area only for use when off the bike for up to 3 hours of **continuous** use. Experience suggests that you will get the best from your HeatWave, by switching the batteries **ON and OFF** as described below.

Normally you would switch your HeatWave **ON** approximately 10 minutes **before** going outside. Depending on the external temperature and how physically active you are, you should then be able to switch the garment **OFF** after approx. 15 – 20 minutes, as the heat generated from your muscles will be sufficient to keep you warm.

If you stop, or the temperature drops or you feel cold, switch the garment **ON** immediately until you either start moving again or you reach a comfortable temperature, when you may be able to switch it **OFF** again.

## Connecting to the Motor Cycle

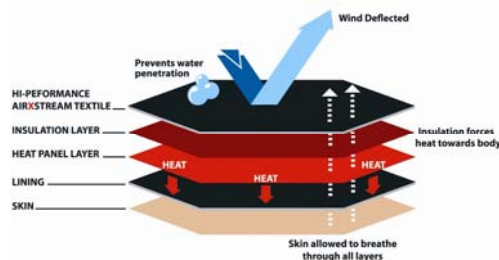
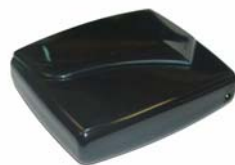
The HeatWave belt is simple to operate and set-up. Every belt comes supplied with a standard power cord, which has an inline 7.5Amp fuse. The fused line should be connected to the motorcycle battery positive terminal. The other should be connected to the battery negative terminal.

To operate the HeatWave, simply plug the belt power cord into the socket.

The belt will start to heat up and will reach its maximum temperature in around 10 - 15 minutes. The self-regulating properties of the belt will prevent it from overheating.

## Using the Battery

1. Remove the connecting cables from the pocket.
2. Insert the small 1.3mm DC plug into the battery.
3. Use the **ON / OFF** switch on the battery pack to control the heat output.



## Charging the Battery

1. Remove the battery pack from the belt.
2. Connect the charger unit to the charging socket on the battery pack. (The charger should be connected to the battery before inserting into the wall socket).
3. Plug the charger into the wall socket.
4. Switch on the wall socket.

The red light on the front of the charger will light up when the charger is checking on the level of battery power. Fully depleted battery packs will take approximately 3 hours to fully charge.

The red light stays on continuously while the battery is being charged.

When the battery is completely charged, the system stops any current entering the battery. The red light goes off at this stage and a green light comes on. This makes the system completely safe even if fully charged batteries are left plugged into the charger.

The charger supplied has been chosen specifically for the battery packs supplied. No other charger must be used. The use of any other charger will invalidate the warranty.

## Safety Features

The FABROC® heating system has been designed for safe and reliable use. It has been tested to comply with European safety regulations and has been CE marked. Safety devices are included to ensure the unit is rendered safe, even under fault conditions. **DO NOT** replace or interfere with the electrical components in the heated belt or the battery and charger unit.

The HeatWave, including portable battery pack, is not designed to be used under water. In addition, the portable battery pack must not, under any circumstances, be immersed in water as this can cause electrical faults.

## Cleaning Instructions

Remove the batteries from the heated belt. Hand wash in warm water using any commercial soap product. Rinse thoroughly. It is not advisable to use fabric conditioner or strong detergents.

If using this product with the EXO2 heat controller... **Never remove the metal backing plate of your controller as this will invalidate your warranty even if refitted later as the water seal will have been breached.**